



MADE IN *Manhattan*

With its breathtaking backdrop of the New York skyline, Randy and Craig's apartment is an oasis of calm in the city that never sleeps

WORDS JUDITH WILSON | PHOTOGRAPHY HALLIE BURTON | STYLING ANNA LAST



The view from Randy and Craig's 29th-floor apartment is stunning – windows on three sides look out over Manhattan's skyscrapers.



Randy and Craig's Diamond table is by Molteni & C, available at Campbell Watson. The Little Apollo dining chairs are from M2L and are upholstered in Varana F6 2073 by Crypton, available from Artifort. The neon chandelier is from Lite Brite Neon. Will's Art Warehouse sells original paintings and photography.

The property

TYPE A 29th-floor, 2,600 sq ft apartment in a newly built high-rise.

SPACE Open-plan living room with sitting and dining areas, home office, hall, three bedrooms with en suites, WC.

LOCATION East side, midtown Manhattan.

Randy and Craig Rubin are living their version of the American dream – in a modern high-rise apartment with ever-changing views of the Big Apple. ‘We have windows on three sides, with a panorama that takes in the East River and landmarks such as the Chrysler building,’ says Randy. ‘I lie in bed at night and watch a giant Pepsi sign shining across the city – you don’t get more New York than that.’ Brought up between New York and Detroit, Randy is clearly still in love with Manhattan’s hectic charm. ‘I often look at all the apartment blocks and think of the thousands of stories behind their windows,’ she muses.

The story of their own home is one of inspired thinking and immaculate organisation. When Randy and her husband, Craig, founders of the US fabric label Crypton, bought the apartment three years ago, they knew they were onto a good thing. It’s bigger than average, and ‘every bedroom has an en-suite bathroom – a rarity in New York’, Randy says. They bought off-plan and called in Ghislaine Viñas of GV Interiors, whose modern approach matched their own vision, to help them realise their dream. ‘We wanted a designer who would embrace our fabrics and create an apartment that was drop-dead gorgeous,’ says Randy.

The result is a cool mix of white and citrus shades, giving Randy a clean slate into which she can introduce new colour on a whim. ‘If I want to add yellow this autumn, I can,’ she says, pointing out that the acid tones throughout are easy to mix with new bright shades. Her other key requirement was a space that ran like clockwork – chairs swivel from zone to zone, clutter disappears into vast closets, and practical Crypton fabrics mean you can knock a glass of red wine over a white sofa and not worry about stains – yes, really! ‘That sofa has been cleaned hundreds of times, and it still looks perfect,’ she says.

The couple’s art collection puts a personal stamp on the apartment – they love modern photography, and buy pieces with a sense of humour, like the images that hang either side of the dining table. One shows a woman sticking her bubble gum under the table – ‘My mom always did that,’ says Randy – the other is a portrait of Craig’s ‘fancy’ mother. ‘I find it very amusing that our two “mothers” sit and look at one another disapprovingly!’ she laughs.

As an antidote to working hard, the couple love to entertain. ‘We make brunches and serve our signature dishes, such as egg salad pie with black caviar and sour cream,’ says Randy. At night, guests gather at the table, sip cocktails and spy on the city as it glitters below. It’s all so slick, it’s hard to imagine there were any glitches while the apartment was in progress. ‘The builders were late and the European furniture was delayed,’ Randy says, ‘but it all came together in the end.’ For more details about Crypton, click on cryptonfabric.com. See some of Ghislaine Viñas’s work at gvinteriors.com. >

‘New York is a very exciting place, but when I come home I don’t need excitement. I just want a clean, minimal space.’

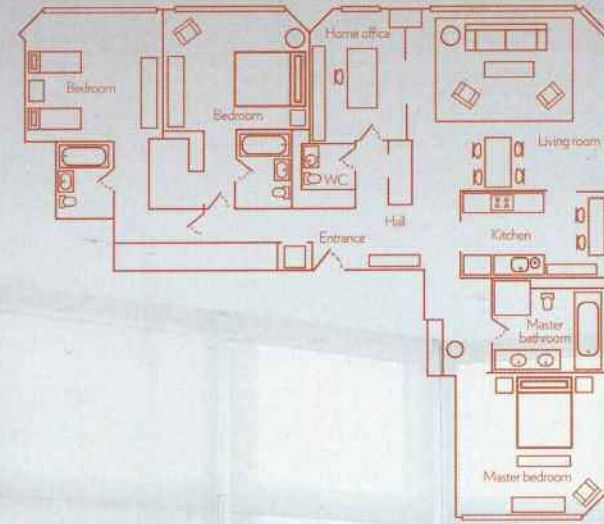
What they did

- Knocked down walls to create one large, open-plan living space.
- Laid a solid-maple floor throughout.
- Dropped all the ceilings by 6in and created new false ones to install recessed lighting.
- Painted the walls, ceilings and joinery white.
- Created a feature wall in the home office using Crypton fabric and custom-made shelving.

LIVING ROOM

‘We wanted a clean, white space with furniture in clearly defined shapes,’ says Randy. Seating and colours connect the different areas, so the orange of the chairs is echoed in the office, and the curves of the sofa are repeated in the dining chairs.

The Milou sofa, upholstered in Bella by Crypton, comes from M2L in New York. Find similar at Twentytwentyone. The Metropolitan armchairs are by B&B Italia. The Tunnel coffee table and the side table are both from Dune in New York. The Hugo floor lamp is by Terzani, available at Chaplins. Find a rug like this at WovenGround. The cushions are by Madeline Weinrib at Harrods.



'I want people to walk into this apartment and say "It feels great".'



Home truths

What's your favourite sound, Randy? The doorbell when we're starving and expecting a food delivery!

How do you chill out? We love to watch episodes of 24 – we can stay in for hours playing them back to back.

Ideal Saturday in Manhattan? Three hours' shopping in Bergdorf Goodman, followed by lunch, and then maybe a walk in Central Park.

Which possession would you save from a fire?

Our collection of art, but in particular our portrait of Craig's mother.

Where do you hide things?

That's the beauty of this apartment – everything can be tucked away in the closets.

HOME OFFICE

Randy and Craig divide their time between working away and at home, so a shared open-plan space was crucial. 'Mostly Craig hogs it and I end up at the dining room table,' says Randy. A feature wall upholstered in orange suede, and an orangey-red rug help to define and zone the area.

The desk is from M at Mercer in New York. SCP sells similar. The Meda desk chair, upholstered in Calypso Tangelo by Crypton, is by Vitra. The Kristall chandelier is by Loo. Find similar at Cameron Peters.



KITCHEN

Randy and Craig always start their day at the kitchen's breakfast bar, which is extra-high so they can look out over New York's East River.

For units like these, try the Solar kitchen from Ikea. The appliances are by Miele and Sub Zero. Nest sells Cherner bar chairs.

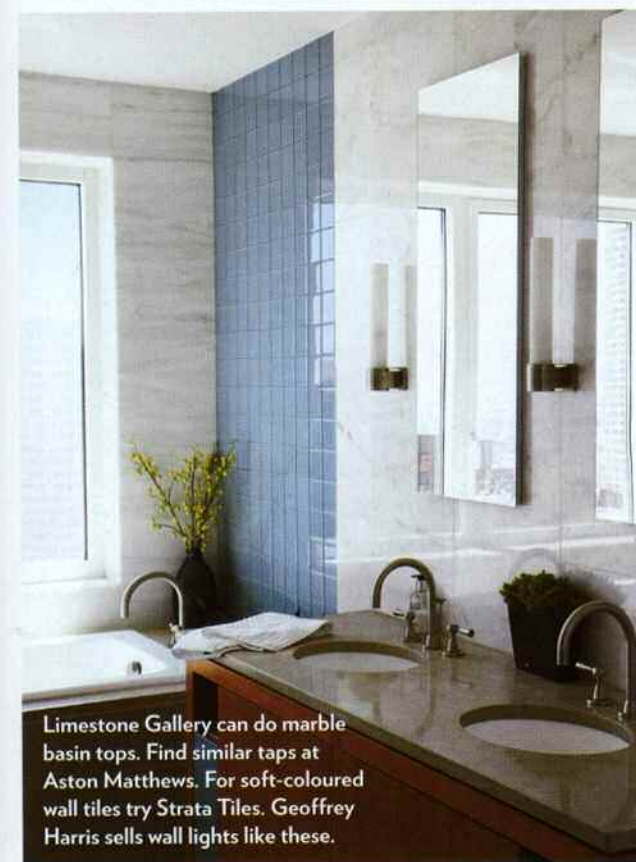
BEDROOM

The couple wanted their bedroom to be a simple, tranquil space. Soft grey and white create a sense of calm, but the papier-mâché artwork by Xavier Escriba, and a tall, sculptural light in red silk provide shots of bright colour. 'I love the way the lamp glows – it adds a certain softness,' says Randy.

The Skin bed is from Dune, and the headboard is covered in Smart Suede Oyster by Crypton. Ivory White stocks Jeremy Cole wall sconces like this. The silk light is from Aqua Creations; Bowles and Linares sells similar.

VISIT OUR WEBSITE

To see more beautiful properties, both here and abroad, check out livingetc.com/houses.



Limestone Gallery can do marble basin tops. Find similar taps at Aston Matthews. For soft-coloured wall tiles try Strata Tiles. Geoffrey Harris sells wall lights like these.

